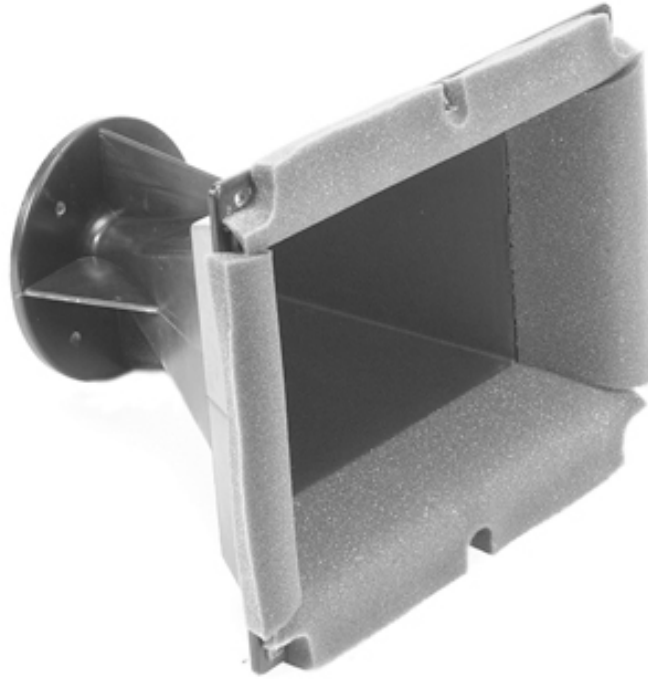


CH™ 642QT



FEATURES

- Horn Type: Constant Directivity (Quadratic Throat Waveguide™)
- Coverage Pattern: 60° H x 40° H
- Throat size: 1.6"
- Low Frequency Limit: 800 Hz
- Mouth Dimensions: 13.0" W x 8.5" H
- Overall Dimensions : 12.0" x 15.5" x 11.5" (H x W x D)
- Weight Unpacked: 4.00 lb(1.814 kg)
- Weight Packed: 6.00 lb(2.721 kg)
- Width Packed: 13"(33.02 cm)
- Height Packed: 17.37"(44.1198 cm)
- Depth Packed: 13.5"(34.29 cm)