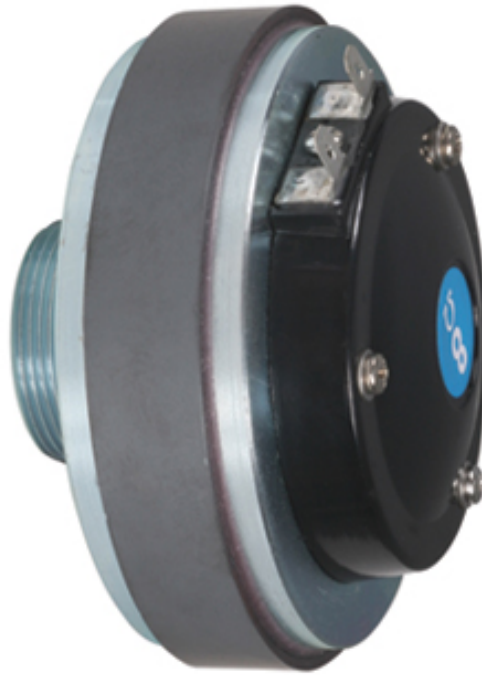


14T™ Driver



OVERVIEW

14T 34MM TITANIUM DRIVER

FEATURES

- 1.4"
- Sensitivity: 105 dB / 1 Watt at 1 meter On-axis on 90° H x 45° V horn
- Nominal Efficiency: 30%
- Frequency Response: 1.5 kHz to 20 kHz
- Recommended Crossover: 2,000 Hz at 12 dB / Octave
- Power Capacity 1000 Hz to 20,000 Hz: 100 W peak 50 W program 25 W continuous
- Diaphragm: Commercially pure titanium
- Voice Coil Diameter: 1.4" / 34.4 mm
- Voice Coil Material: Copper clad aluminum wire on an aluminum former
- Flux Density: 12,700 gauss (1.15T)
- Dimensions: 3.44" (87.4 mm) diameter x 2.30" (58.4 mm) depth
- DC Resistance: 6.4 Ohms
- Horn Coupling Diameter: .938" (23.8 mm)
- Minimum Impedance: 6.8 Ohms
- Horn Coupling Threads: Standard 1 3/8" - 18"
- Nominal Impedance: 8 Ohms
- Net Weight: 33.0 oz.
- Throat Parameter: .975" / 23.4 mm
- Shipping Weight: 38 oz.
- Lowest Recommended Crossover: 1,800 Hz at 12 dB / Octave
- Weight Unpacked: 2.14 lb(0.97 kg)
- Weight Packed: 2.14 lb(0.97 kg)
- Width Packed: 3.5"(8.89 cm)
- Height Packed: 3.5"(8.89 cm)
- Depth Packed: 1.75"(4.445 cm)