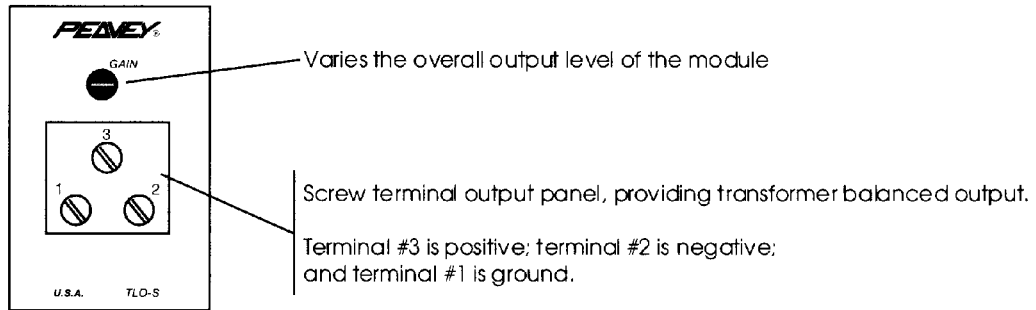


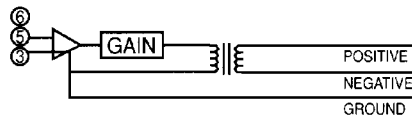
MA™ SERIES MODULE TLO™-S

Transformer balanced output module with screw terminal

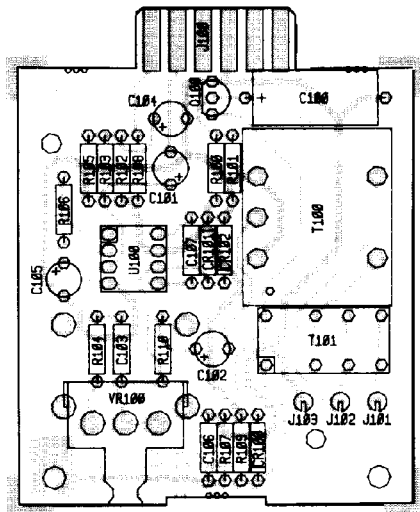


INSTALLATION:

The module installs at the rear panel of products accepting the standard 6-pin card-edge module connection. Align card-edge connector with top and bottom circuit board guides. Snap module into card-edge socket, push flush with rear panel, and install (furnished) mounting screws.



BLOCK DIAGRAM



SPECIFICATIONS:

Frequency Response: 20 Hz to 20 kHz \pm 4 dB
Signal-to-Noise Ratio: 80 dB
Source Impedance: 600 ohms, transformer balanced
Mounting: Edge card connector
Weight: 4 oz.
Dimensions: 3.07" H x 1.38" W x 3.46" D

